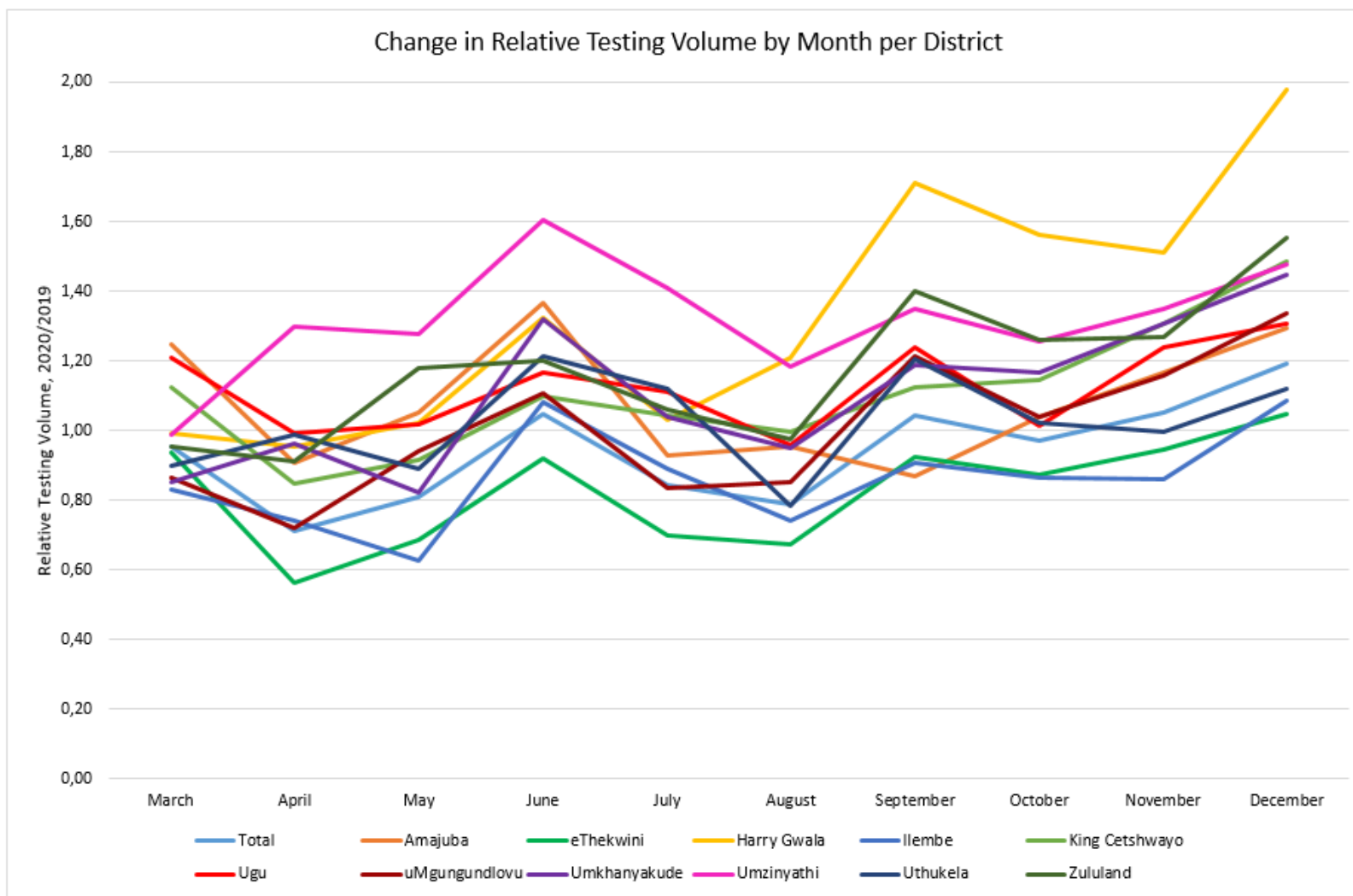


Note: This is Online Supplementary Document 1 of Severaj R, Gounden V. Effect of COVID-19 lockdown on glycated haemoglobin testing and utilisation in KwaZulu-Natal, South Africa. Afr J Lab Med. 2024;13(1), a2302. <https://doi.org/10.4102/ajlm.v13i1.2302>

Supplemental Data

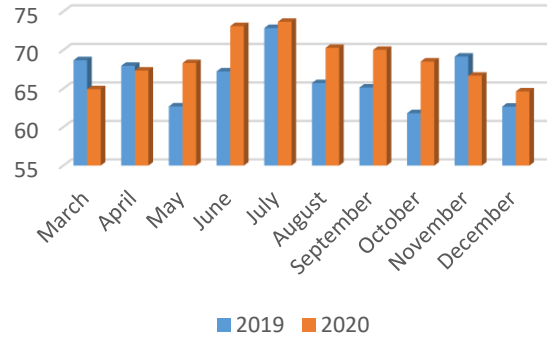


Supplementary Figure 1: Change in the Relative HbA1c Testing Volume (2020/2019) per month for each KwaZulu-Natal health district for patients attending public health facilities, 01 March 2019 – 31 December 2019 and 01 March 2020 – 31 December 2020.

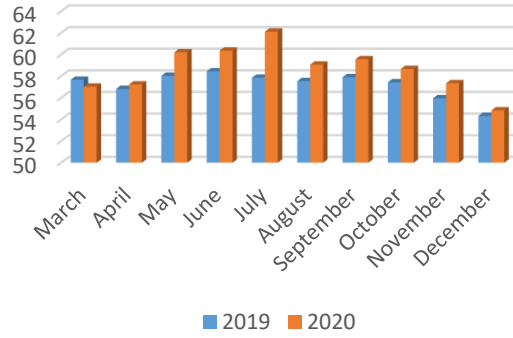
Supplementary Table 1: Relative Change in Abnormal HbA1c Test Results, 2020/2019, by Month Per KwaZulu-Natal Health District, for patients attending public health facilities, 01 March 2019 – 31 December 2019 and 01 March 2020 – 31 December 2020.

	Total	Amajuba	eThekwini	Harry Gwala	Ilembe	King Cetshwayo	Ugu	uMgungundlovu	Umkhanyakude	Umzinyathi	Uthukela	Zululand
March	0.98	0.95	0.99	0.90	1.03	0.96	0.98	0.94	0.97	1.04	0.97	0.98
April	1.02	0.99	1.01	1.00	1.03	0.96	1.04	0.98	1.00	0.96	1.03	1.01
May	1.06	1.09	1.04	0.95	1.05	1.10	1.15	1.05	1.06	1.12	1.00	1.00
June	1.05	1.09	1.03	1.00	1.01	1.07	1.04	1.07	0.97	1.12	1.08	1.00
July	1.06	1.01	1.07	1.11	1.00	1.03	1.15	1.01	0.97	0.95	1.01	1.02
August	1.01	1.07	1.03	1.10	1.05	1.01	0.98	0.89	0.96	1.02	0.93	1.03
September	1.02	1.07	1.03	1.01	0.96	0.84	1.03	0.89	0.96	1.02	0.89	1.00
October	1.01	1.11	1.02	0.90	0.99	0.93	0.95	0.97	1.05	1.04	1.06	0.95
November	1.01	0.96	1.02	0.87	0.97	0.93	1.14	0.95	0.98	1.00	1.04	1.04
December	0.99	1.03	1.01	0.94	0.93	0.92	0.95	0.98	1.05	0.93	0.96	0.94

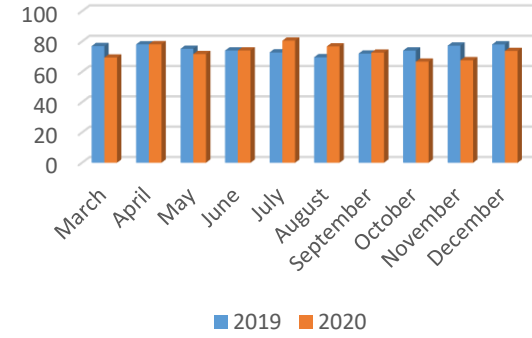
Percentage Abnormal Results for Amajuba District



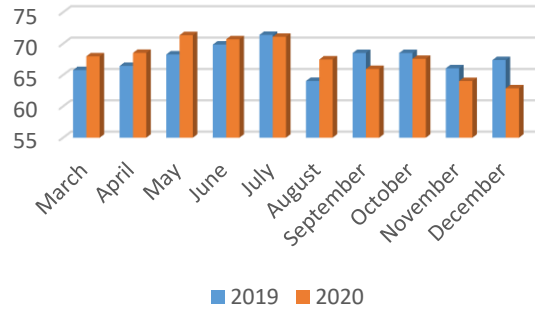
Percentage Abnormal Results for eThekweni District



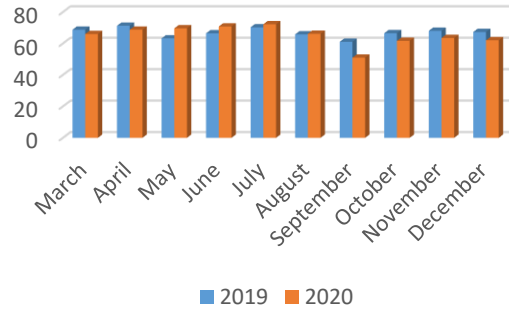
Percentage Abnormal Results for Harry Gwala District



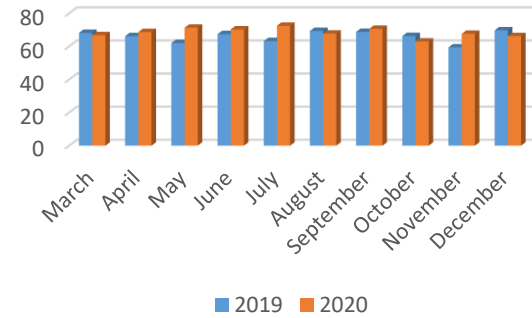
Percentage Abnormal Results for Ilembe District

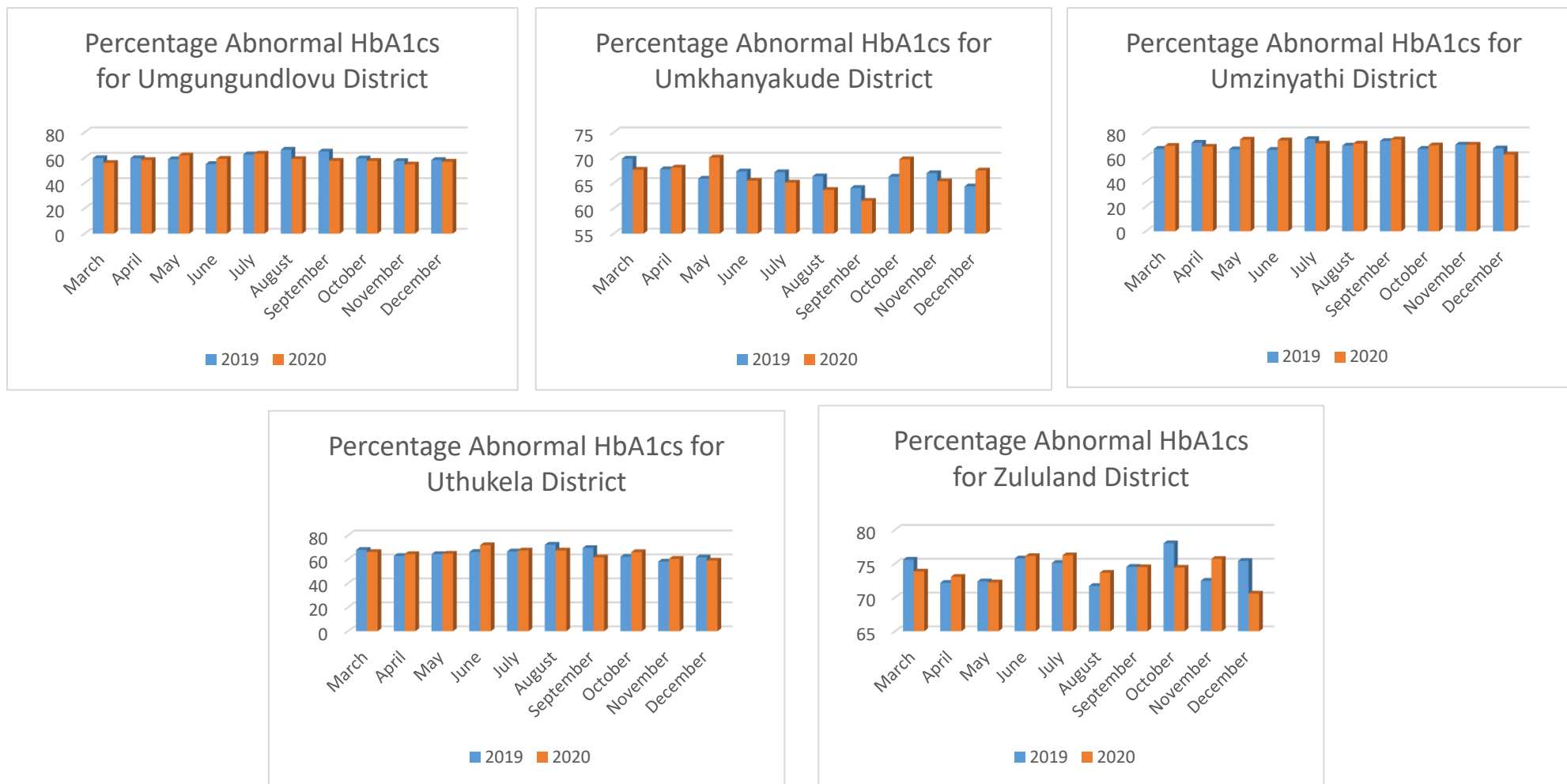


Percentage Abnormal HbA1cs for King Cetshwayo District



Percentage Abnormal HbA1cs For Ugu District





Supplementary Figure 2: Percentage of abnormal HbA1c results per month for each district for all patient attending public health facilities in KwaZulu-Natal, South Africa, 01 March 2019 – 31 December 2019 and 01 March 2020 – 31 December 2020

Supplementary Table 2: Number of HbA1c Tests Performed Per Patient among patients attending public health facilities in KwaZulu-Natal, South Africa, 01 March 2019 – 31 December 2019 and 01 March 2020 – 31 December 2020.

Number of HbA1c Tests Performed Per Patient during Study Period	Number of Patients	
	2019	2020
1	140 625	135 274
2	13 358	11 582
3	1697	1270
4	248	191
5	41	33
6	10	5
7	5	3
8	0	0
9	0	1